

GS200 REAL TIME PCR SYSTEM



Dual block real time PCR
One machine dual use
Simple and elegant

GS200 Real-Time PCR System is a portable fluorescence quantitative PCR instrument developed by Bio-Gener company. This product adopts four channel and double 16-well blocks, which can run two different files simultaneously. The product combines a variety of advanced technologies: 7-inch high-definition TFT color touch screen, win10 operating system with analysis software, complete quantitative analysis and printing report without computer. It adopts American Marlow custom-made peltier, high sensitivity photoelectric detector and side scan technology, to ensure superior performance and stable detection results.

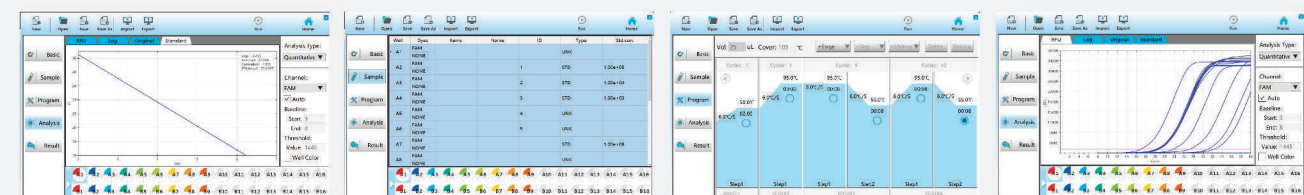
Application: the product can be used for real-time detection in pasture, forest farm, breeding farm and water source. It is used for rapid diagnosis of disaster and epidemic disease, inspection and quarantine in the field of food safety, and scientific research in biological laboratories.

Feature

- Four channels and double 16-well blocks design, can run two different programs at the same time.
- Small size, light weight, easy to carry.
- Powerful software analysis function, which can be used for Quantitative Analysis, Melting Curve Analysis, Genotyping, Relative quantification, and etc.
- 7-inch high-definition TFT color touch screen, and embedded win10 operating system.
- 20G flash memory can save 40,000 experimental data.
- Printer as an optional which can print the records directly, no need to connect the computer.
- Imported 32 bundled optical fibers are used to collect fluorescence from the side to increase the intensity of fluorescence signal and reduce light conduction damage.
- Black reaction block to avoid background noise.
- LED light source has the advantage of energy saving, environmental protection, long service life and maintenance free.
- The electromagnetic lock cover technology prevents the hot lid from accidentally opening.
- Front shutdown button makes file data more secure.
- Constant current control circuit makes power output smooth and extends Peltier life, also improves temperature control accuracy
- It has the protection functions of over-current, over temperature, power-off data self recovery, etc.
- Forward and backward air vent design, can be placed side by side, saving laboratory space.

(Specification

Model No.	GS201	GS202
Sample Capacity	32X0.2ml(2X16well, dual block)	
Consumable	Clear0.2 ml PCR tube /8-tube strips	
Reaction Volume	10-100µl	
Temperature control technology	Marlow customized Peltier allow 1.000.000cycles	
Temperature Range	0-100℃(Resolution:0.1℃)	
MAX. Ramp Rate	5℃/s	
Temperature fluctuation	±0.1℃	
Uniformity	±0.25℃	
Accuracy	±0.25℃	
Hot Lid Temperature	30-115℃(Adjustable, default 105℃)	
Temperature Control	Block/Tube	
Excitation wavelength	460-650nm	
Emission wavelength	500-580nm	500-720nm
Factory Calibrated Dyes	F1:FAM/SYBR GreenI F2: HEX/VIC/JOE/TET	F1: FAM / SYBR GreenI F2: HEX/VIC/JOE / TET F3: ROX/ TEXAS - RED F4: Cy5/ Quasar-670
Excitation	Long life LED	
Detection	High sensitivity photoelectric detector	
Dynamic Range	1-10 ¹⁰ Copies	
Sensitivity	1 copy	
Feature function	Quantitative/qualitative analysis, Melting curve, Genotyping	
Date Export Formats	excel,csv,txt	
Printing	Report can be printed (optional USB thermal printer)	
Display	7 inch color TFT touch screen,1280x800 pels	
Communication Parts	WIFI/USB2.0	
Dimension	300x267x198mm(LxWx H)	
Net Weight	6.7KG	
Voltage	220VAC 50Hz	
Power	DC15V 255W	



Standard curve

Sample setting

Program setting

Amplification Curve